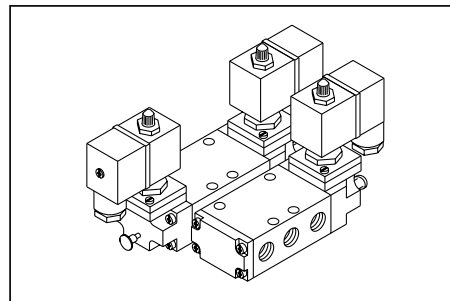


## G 1/4 - 5/2 Modular Spool Solenoid Valves

- Sturdy and rugged in construction.
- Available in side ported and subbase design.
- Solenoid operated valves available with spring return as standard, external pilot as optional.
- Also available in 5/3 version.
- Facility of gang manifolding for sub base design.



### PART LIST

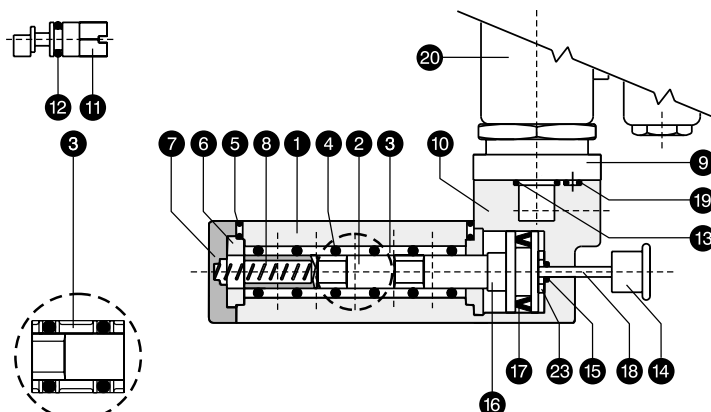
NO.	DESCRIPTION	QTY.	
		Single Sol.	Double Sol.
1	Valve body	1	1
2	Spool	1	1
3	Shell	5	5
4	'O' ring ( Cage )	6	6
5	'O' ring ( Body )	4	4
6	Bush	2	2
7	Spring housing	1	--
8	Spring	1	--
9	Tube Assly.	1	2
10	Solenoid housing	1	2
11	M. O. pin	1	2
12	'O' ring for M. O. pin	1	2
13	'O' ring for tube assly.	1	2
14	Knob for plunger	1	2
15	'O' ring for plunger	1	2
16	Piston	1	2
17	'U' cup for piston	1	2
18	Plunger	1	2
19	'O' ring ( Sol. housing )	1	2
20	Coil assembly	1	2
21	Sub base 'O' ring*	5	5
22	Sub base plate*	1	1
23	Washer	1	2

Seal kit consists of items 3, 4, 5, 12, 13, 15, 17, 19 & 21 ( With sub base kit only ) \* For sub base valve only.

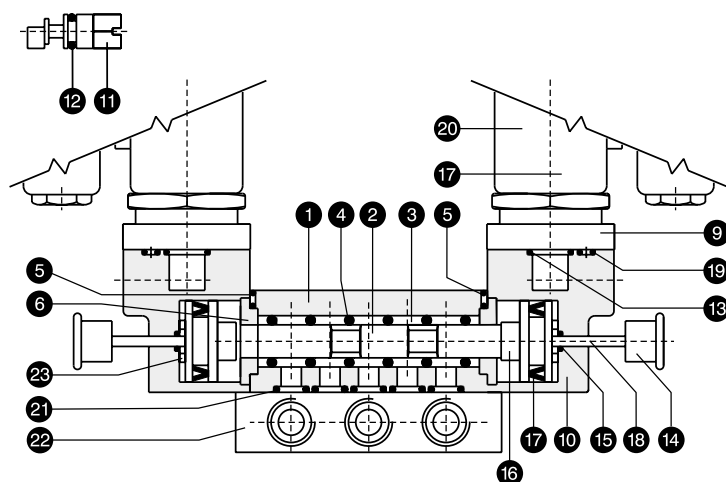
### COIL SPECIFICATIONS

Type	Valve with (G50 - 8W ) coil *
Tube Assy. construction	SS Plunger with NBR seals, SS magnet core assembled with brass adaptor.
Coil voltages	AC : 24, 42, 48, 110, 240, 440 V 50Hz DC : 12, 24, 48, 110, 240 V
Voltage range	+ 10% / -15%
Power consumption	AC : Pull 21 VA, Hold : 14 VA DC : 10 WATT
Duty cycle	100%
Class of insulation	F ( Winding wire of class 'H' insulation )
Degree of protection	IP 65 - IS 2147 ( Special coils available with flame-proof housing )
Cable connector	PG 11

\* Modular spool valve is also offered with flame-proof coil duly certified by CMRS Dhanbad for grades I, IIA, IIB. Refer data sheet PMV-07 for details.

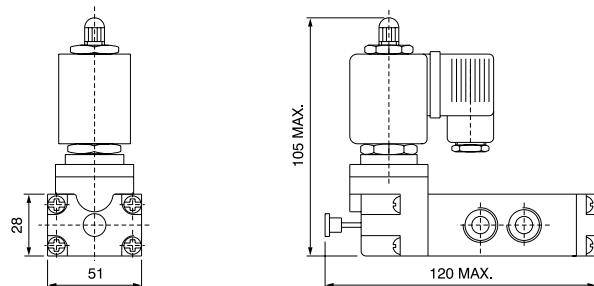
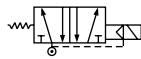


5/2 Single solenoid valve ( Side ported design )

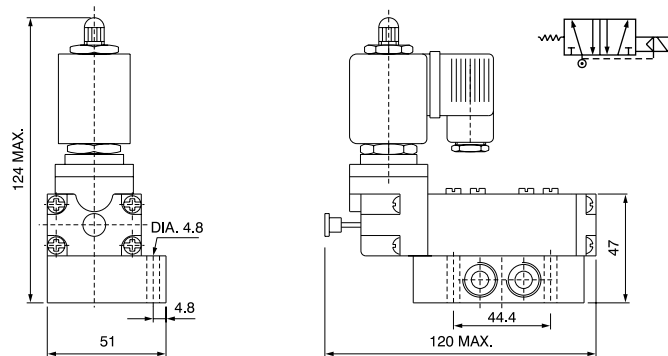


5/2 Double solenoid valve ( Sub base design )

## G 1/4 - 5/2 SINGLE SOLENOID MODULAR SPOOL VALVE



Side Ported Design



Sub Base Design

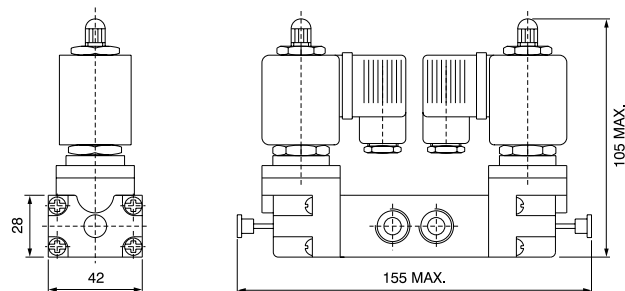
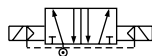
### PART NOS.

	Side ported valve	Valve with sub base plate	Seal kit for side ported valve	Seal kit for sub base valve
Sol. operated Spring return	G 53014	G 53214	SK 53014	SK 53214
Base plate for Sub base valve	BS 14			

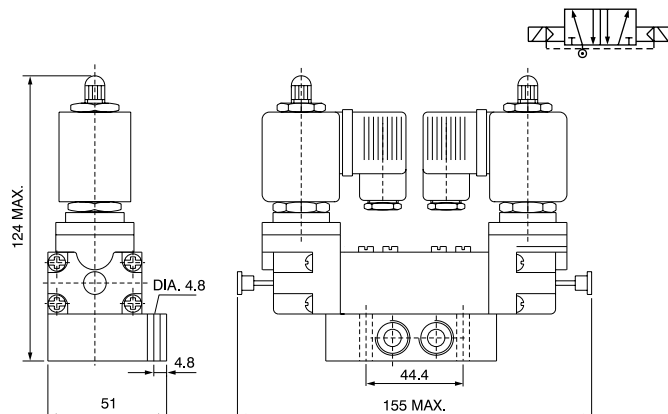
### SPECIFICATIONS

Medium	Compressed air, Filtered
Design	Spool type with spring return
Working pressure	2.5 - 10 Bar
Ambient / fluid temp.	- 10° to 55° C
Cv ( Nominal flow )	1.0 ( 1000 lit/min.)
Optional feature	PIC with light indicator External pilot actuation Manual override ( screw type )
Response time at 5 Bar	On time : 10 ms. Off time : 35 ms.
Materials	Body : Aluminium Seals : NBR

## G1/4 - 5/2 DOUBLE SOLENOID MODULAR SPOOL VALVE



Side Ported Design



Sub Base Design

### PART NOS.

	Side ported valve	Valve with sub base plate	Seal kit for side ported valve	Seal kit for sub base valve
Sol. operated	G 53204	G 53224	SK 53204	SK 53224
Base plate for Sub base valve	BS 14			

### SPECIFICATIONS

Medium	Compressed air, Filtered
Design	Spool type
Working pressure	1.5 - 10 Bar
Ambient / fluid temp.	- 10° to 85° C
Cv ( Nominal flow )	1.0 ( 1000 lit/min.)
Optional feature	PIC with light indicator External pilot actuation Manual override ( screw type )
Response time at 5 Bar	On time : 10 ms.
Materials	Body : Aluminium Seals : NBR